



TMA-validated antibodies

**Cat nr AE00381**

**Product Datasheet**

Rabbit Recombinant Antibody, AE623R to:

## Nucleolin

Nucleolin; Protein C23; C23; NCL; Nsr1

Cellular localization	nucleus, nucleolus
Official Symbol (Gene)	NCL
GenelD	4691
SwissProt	P19338

Confirmed Applications	IHC
Positive controls	Fallopian tube, gallbladder, urothelial carcinoma
Aeonian Rating©	90

Purification By Protein A from bioreactor concentrate

Formulation	<input type="checkbox"/>	0.2 mg IgG/ml in PBS with 0.5% BSA & 0.05% azide.		
	<input type="checkbox"/>	0.2 mg IgG/ml in PBS with 0.05% azide, without BSA.		
Amount	<input type="checkbox"/>	200ug	<input type="checkbox"/>	1000ug
Isotype	Rabbit IgG, kappa			

Confirmed species reactivity	Human
Immunogen	Recombinant full-length human Nucleolin protein

Epitope Unknown

Storage instructions	Avoid repeated freeze/thaw cycles. For long term storage, keep small aliquots at -20C or -80C and keep one aliquot at 4C for daily experimentations. Azide will preserve antibody at 4C for 6-12 months, when kept away from direct sun light.
----------------------	--

Expiration	Integrity warranted for 24 months after purchase when handled and stored according to instructions, see below.
------------	--

Warranty	This product is only warranted for the specifications as described in this product sheet and only when the product is handled and stored according to instructions. User should validate this antibody in the application and tissue/cell type as required, after confirmation of integrity upon receipt is obtained by reproducing the performance as described below. Should such confirmation not be attempted, any warranty is void. In case of non-conformance, user needs to contact us immediately for replacement or refund.
----------	--

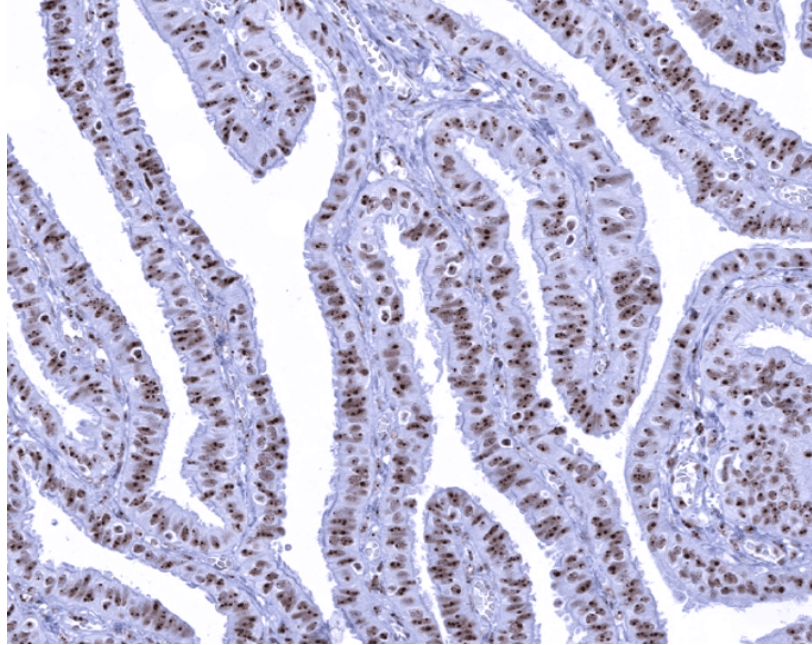
Liability	This product is for in vitro research use only. Any other applications, such as diagnostics or therapeutics, or in vivo experiments, and the validation of this product therein, are solely at the responsibility of the buyer/user.
-----------	--

Product performance	see next pages
---------------------	----------------

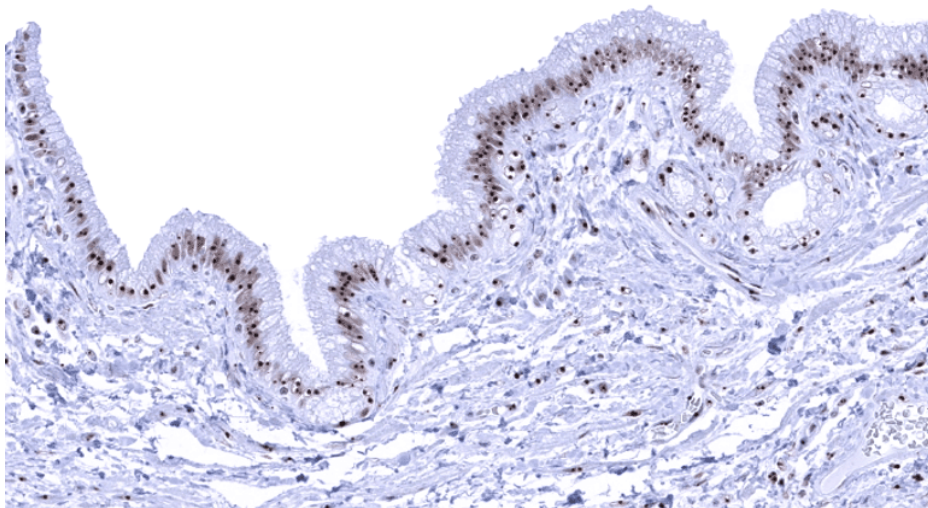
**Product data:**

**Immunohistochemistry (IHC):**

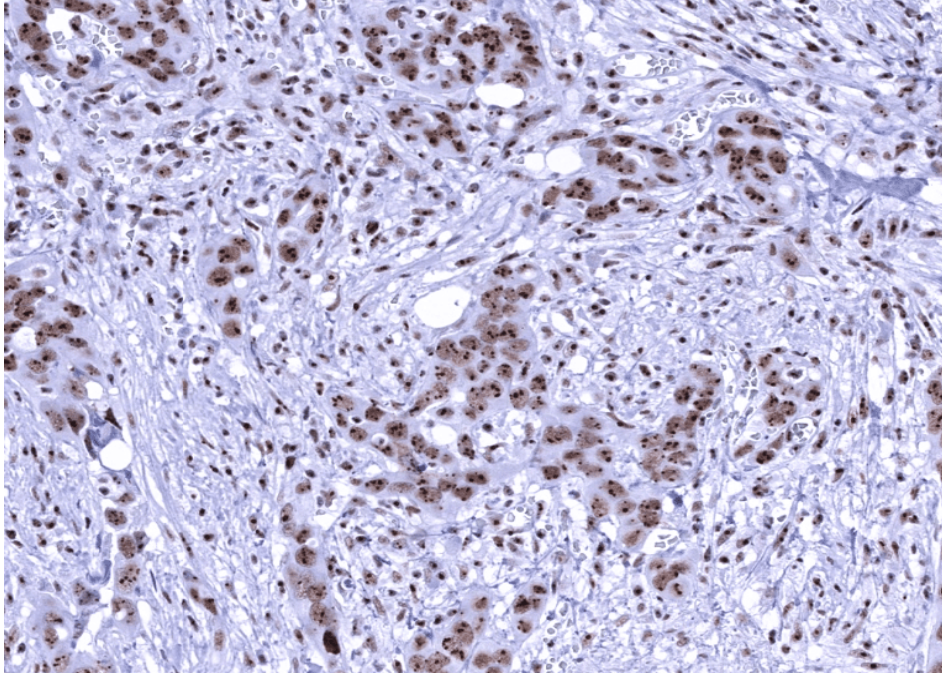
This product was successfully used to stain nuclei with emphasis on the nucleoli in normal fallopian tube and gallbladder and in urothelial carcinoma sections. Recommended concentration: 1-3ug/ml



Formaldehyde-fixed, paraffin-embedded human fallopian tube stained with Nucleolin Rabbit Recombinant Antibody AE00381 at 1-2  $\mu\text{g/ml}$  for 60 minutes at 37°C. Epitope retrieval: Autoclave at 121°C, pH7.8 for 5 min followed by 20 min cooling. DAB staining by HRP polymer.



Formaldehyde-fixed, paraffin-embedded human gallbladder stained with Nucleolin Rabbit Recombinant Antibody AE00381 at 1-2  $\mu\text{g/ml}$  for 60 minutes at 37°C. Epitope retrieval: Autoclave at 121°C, pH7.8 for 5 min followed by 20 min cooling. DAB staining by HRP polymer.



Formaldehyde-fixed, paraffin-embedded human urothelial carcinoma stained with Nucleolin Rabbit Recombinant Antibody AE00381 at 1-2 µg/ml for 60 minutes at 37°C. Epitope retrieval: Autoclave at 121°C, pH7.8 for 5 min followed by 20 min cooling. DAB staining by HRP polymer.

#### Tissue Microarray Validation:

##### Normal tissues

<b>Strong positive</b>	<b>Weak to moderate</b>	<b>No staining at all</b>
adrenal gland	cerebrum grey matter	adipose
appendix mucosa	myometrium	aorta media
appendix muscular wall	pituitary gland posterior lobe	bone marrow
breast		heart muscle
bronchus mucosa		
cerebellum		
cerebrum white matter		
colon mucosa		
colon muscular wall		
duodenum Brunner gland		
duodenum mucosa		
endocervix		
ectocervix		
endometrium, proliferation		
endometrium, secretion		
epididymis		
esophagus squamous epithelium		
fallopian tube		
gallbladder		
ileum mucosa		
liver		
lung		
lymph node		

ovarian stroma  
pancreas  
parathyroid gland  
parotid gland  
pituitary gland anterior lobe  
placenta  
prostate  
rectum mucosa  
renal cortex  
renal medulla  
seminal vesicle  
sinus paranasalis  
skeletal muscle  
skin  
spleen  
stomach  
testis  
thymus  
thyroid gland  
tonsil  
urinary bladder muscular wall  
urothelium

---

### **Cancer tissues**

#### **Strong positive**

#### **Weak to moderate**

#### **No staining at all**

---

breast cancer no special type  
cervix adenocarcinoma  
cervix squamous cell carcinoma  
clear cell ovarian carcinoma  
clear cell renal cell carcinoma  
colorectal adenocarcinoma  
endometrial serous adenocarcinoma  
endometrioid endometrial carcinoma  
esophagus squamous cell carcinoma  
esophagus adenocarcinoma  
follicular thyroid carcinoma  
high-grade serous carcinoma  
invasive lobular carcinoma  
mucinous ovarian carcinoma  
oral squamous cell carcinoma  
ovarian endometrioid carcinoma  
papillary renal cell carcinoma  
papillary thyroid carcinoma  
pharynx squamous cell carcinoma  
prostate adenocarcinoma  
renal oncocytoma  
urothelial carcinoma muscle invasive  
urothelial carcinoma papillary non-invasive  
vulva squamous cell carcinoma

---