



TMA-validated antibodies

Cat nr AE00383

Product Datasheet

Rabbit Recombinant Antibody, AE053R to:

TP53

Cellular tumor antigen p53; Antigen NY-CO-13; Phosphoprotein p53; Tumor protein p53; Tumor suppressor p53; BCC7; LFS1; P53; TRP53

Cellular localization	nucleus
Official Symbol (Gene)	TP53
GenelD	7157
SwissProt	P04637

Confirmed Applications	IHC
Positive controls	colorectal adenocarcinoma, esophagus squamous cell carcinoma, high-grade serous carcinoma
Aeonian Rating©	90

Purification By Protein A from bioreactor concentrate

Formulation	<input type="checkbox"/>	0.2 mg IgG/ml in PBS with 0.5% BSA & 0.05% azide.
	<input type="checkbox"/>	0.2 mg IgG/ml in PBS with 0.05% azide, without BSA.
Amount	<input type="checkbox"/>	200ug
	<input type="checkbox"/>	1000ug
Isotype		Rabbit IgG

Confirmed species reactivity	Human
Immunogen	Recombinant full-length human TP53 protein

Epitope Unknown

Storage instructions	Avoid repeated freeze/thaw cycles. For long term storage, keep small aliquots at -20C or -80C and keep one aliquot at 4C for daily experimentations. Azide will preserve antibody at 4C for 6-12 months, when kept away from direct sun light.
----------------------	--

Expiration	Integrity warranted for 24 months after purchase when handled and stored according to instructions, see below.
------------	--

Warranty	This product is only warranted for the specifications as described in this product sheet and only when the product is handled and stored according to instructions. User should validate this antibody in the application and tissue/cell type as required, after confirmation of integrity upon receipt is obtained by reproducing the performance as described below. Should such confirmation not be attempted, any warranty is void. In case of non-conformance, user needs to contact us immediately for replacement or refund.
----------	--

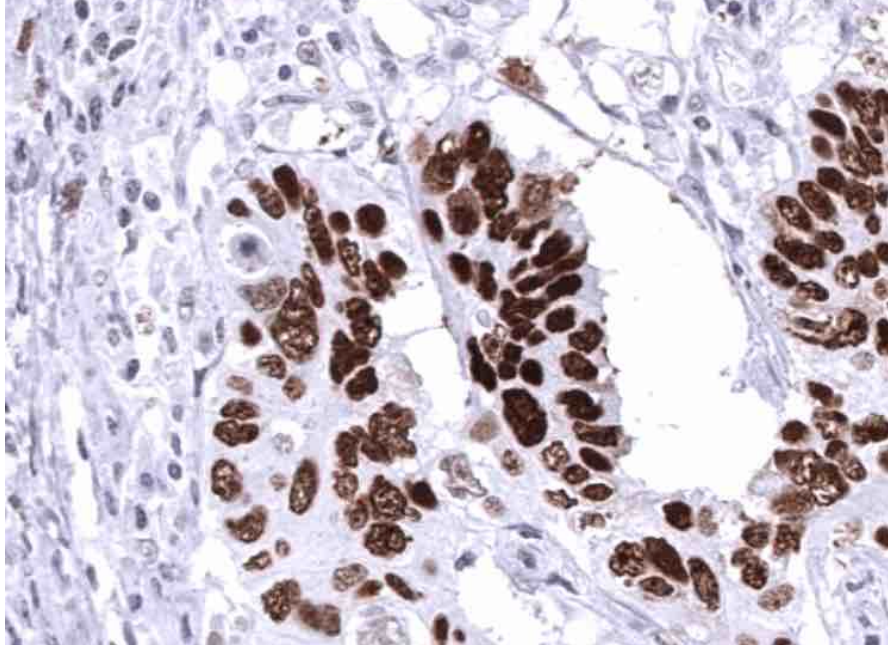
Liability	This product is for in vitro research use only. Any other applications, such as diagnostics or therapeutics, or in vivo experiments, and the validation of this product therein, are solely at the responsibility of the buyer/user.
-----------	--

Product performance	see next pages
---------------------	----------------

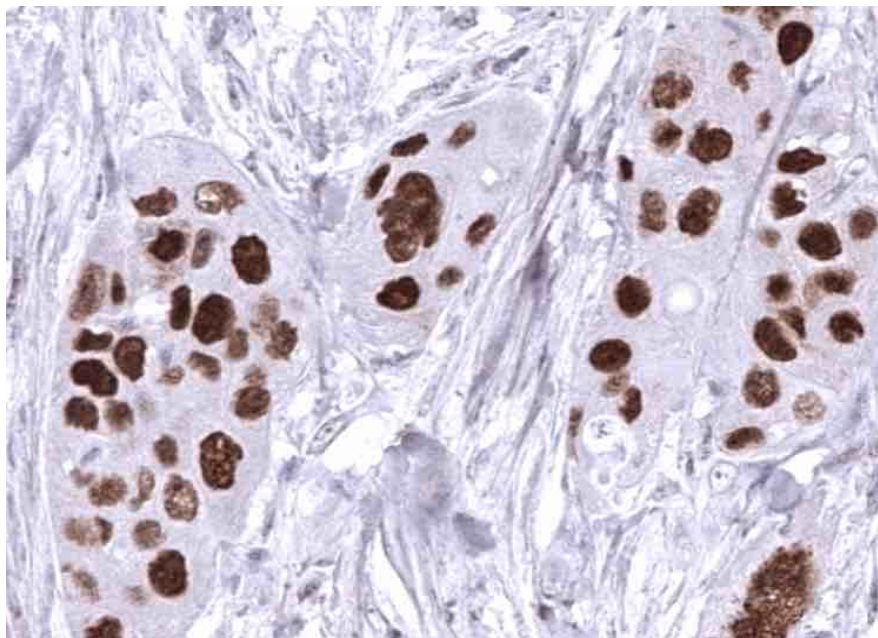
Product data:

Immunohistochemistry (IHC):

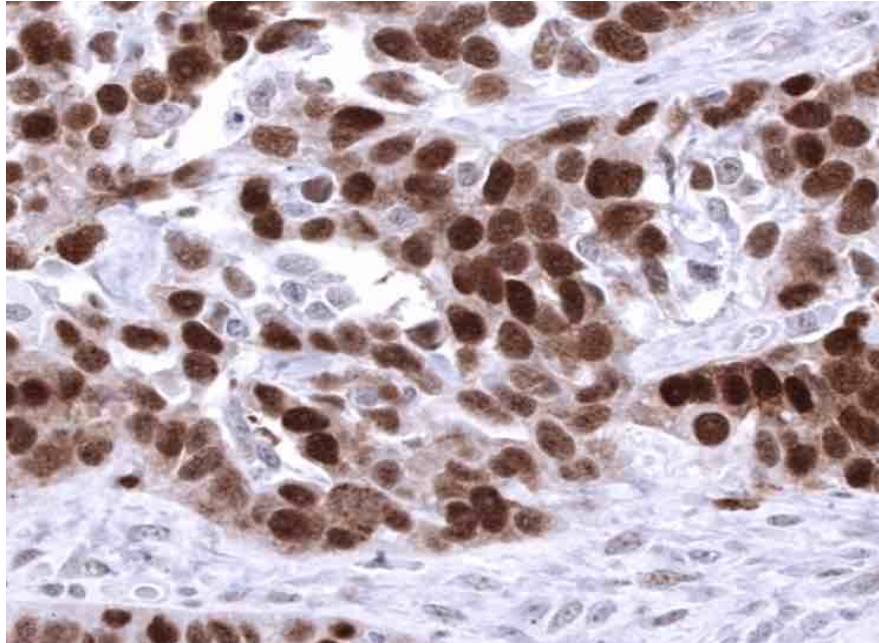
This product was successfully used to stain nuclei in colorectal adenocarcinoma, esophagus squamous cell carcinoma and high-grade serous carcinoma sections. Recommended concentration: 1-3ug/ml



Formaldehyde-fixed, paraffin-embedded human colorectal adenocarcinoma stained with TP53 Rabbit Recombinant Antibody AE00383 at 1-2 $\mu\text{g/ml}$ for 60 minutes at 37°C. Epitope retrieval: Autoclave at 121°C, pH7.8 for 5 min followed by 20 min cooling. DAB staining by HRP polymer.



Formaldehyde-fixed, paraffin-embedded human esophagus squamous cell carcinoma stained with TP53 Rabbit Recombinant Antibody AE00383 at 1-2 $\mu\text{g/ml}$ for 60 minutes at 37°C. Epitope retrieval: Autoclave at 121°C, pH7.8 for 5 min followed by 20 min cooling. DAB staining by HRP polymer.



Formaldehyde-fixed, paraffin-embedded human high-grade serous carcinoma stained with TP53 Rabbit Recombinant Antibody AE00383 at 1-2 µg/ml for 60 minutes at 37°C. Epitope retrieval: Autoclave at 121°C, pH7.8 for 5 min followed by 20 min cooling. DAB staining by HRP polymer.

Tissue Microarray Validation:

Normal tissues

Strong positive

Weak to moderate

No staining at all

endometrium, proliferation	adipose
epididymis	adrenal gland
esophagus squamous epithelium	aorta media
gallbladder	appendix mucosa
ileum mucosa	appendix muscular wall
lymph node	bone marrow
ovary corpus luteum	breast
prostate	bronchus mucosa
renal cortex	cerebellum
skin	cerebrum
tonsil	colon mucosa
urothelium	colon muscular wall
	duodenum Brunner gland
	duodenum mucosa
	ectocervix
	endocervix
	endometrium, secretion
	fallopian tube
	heart muscle
	liver
	lung
	myometrium
	ovarian stroma

pancreas
parathyroid gland
parotid gland
pituitary gland anterior lobe
pituitary gland posterior lobe
placenta
rectum mucosa
renal medulla
seminal vesicle
sinus paranasalis
skeletal muscle
spleen
stomach
testis
thymus
thyroid gland
urinary bladder muscular wall

Cancer tissues

Strong positive

colorectal adenocarcinoma
esophagus squamous cell carcinoma
high-grade serous carcinoma
urothelial carcinoma

Weak to moderate

clear cell ovarian carcinoma
endometrioid ovarian carcinoma
papillary renal cell carcinoma

No staining at all

clear cell renal cell carcinoma
invasive lobular carcinoma
papillary thyroid carcinoma
prostate adenocarcinoma
renal oncocytoma
