



TMA-validated antibodies

Cat nr AE00384

Product Datasheet

Rabbit Recombinant Antibody, AE063R to:

TP63

Chronic ulcerative stomatitis protein; Keratinocyte transcription factor KET; Transformation-related protein 63; Tumor protein p63; Tumor protein p73-like; AIS; B(p51A); B(p51B); CUSP; EEC3; KET; LMS; NBP; OFC8; p40; p51; p53CP; p63; p73L; p73H; p73L; RHS; SHFM4; TP53CP; TP53L; TP63; TP73L

Cellular localization	nucleus
Official Symbol (Gene)	TP63
GenelD	8626
SwissProt	Q9H3D4

Confirmed Applications	IHC
Positive controls	epididymis, esophagus, esophagus squamous cell carcinoma, pharynx squamous cell carcinoma
Aeonian Rating©	92

Purification By Protein A from bioreactor concentrate

Formulation	<input type="checkbox"/>	0.2 mg IgG/ml in PBS with 0.5% BSA & 0.05% azide.
	<input type="checkbox"/>	0.2 mg IgG/ml in PBS with 0.05% azide, without BSA.
Amount	<input type="checkbox"/>	200ug
	<input type="checkbox"/>	1000ug
Isotype		Rabbit IgG, kappa

Confirmed species reactivity	Human
Immunogen	Recombinant region within aa 600-680 of human TP53 protein (exact sequence is proprietary).
Epitope	Region within aa 600-680

Storage instructions	Avoid repeated freeze/thaw cycles. For long term storage, keep small aliquots at -20C or -80C and keep one aliquot at 4C for daily experimentations. Azide will preserve antibody at 4C for 6-12 months, when kept away from direct sun light.
----------------------	--

Expiration	Integrity warranted for 24 months after purchase when handled and stored according to instructions, see below.
------------	--

Warranty	This product is only warranted for the specifications as described in this product sheet and only when the product is handled and stored according to instructions. User should validate this antibody in the application and tissue/cell type as required, after confirmation of integrity upon receipt is obtained by reproducing the performance as described below. Should such confirmation not be attempted, any warranty is void. In case of non-conformance, user needs to contact us immediately for replacement or refund.
----------	--

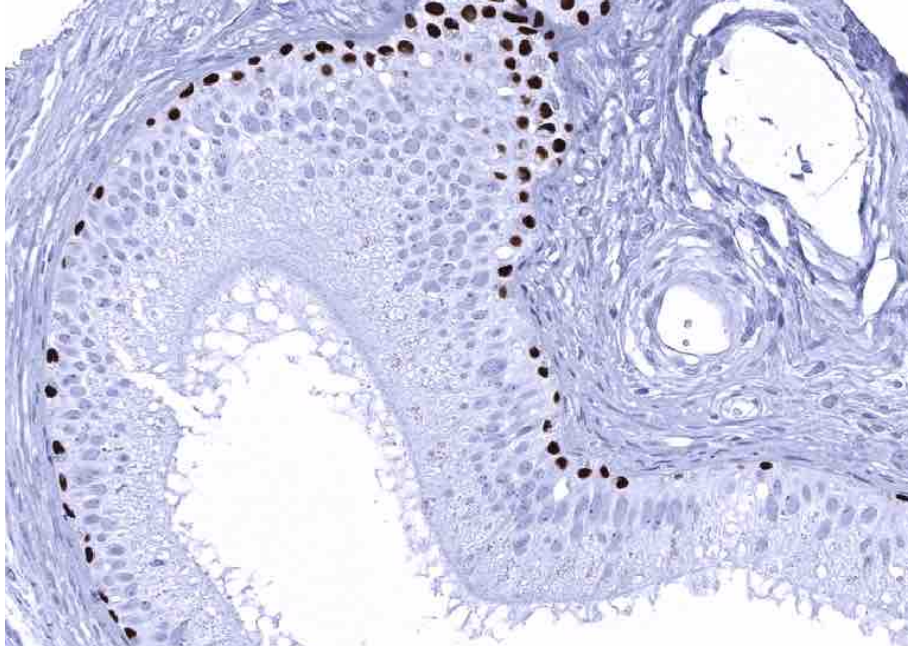
Liability	This product is for in vitro research use only. Any other applications, such as diagnostics or therapeutics, or in vivo experiments, and the validation of this product therein, are solely at the responsibility of the buyer/user.
-----------	--

Product performance	see next pages
---------------------	----------------

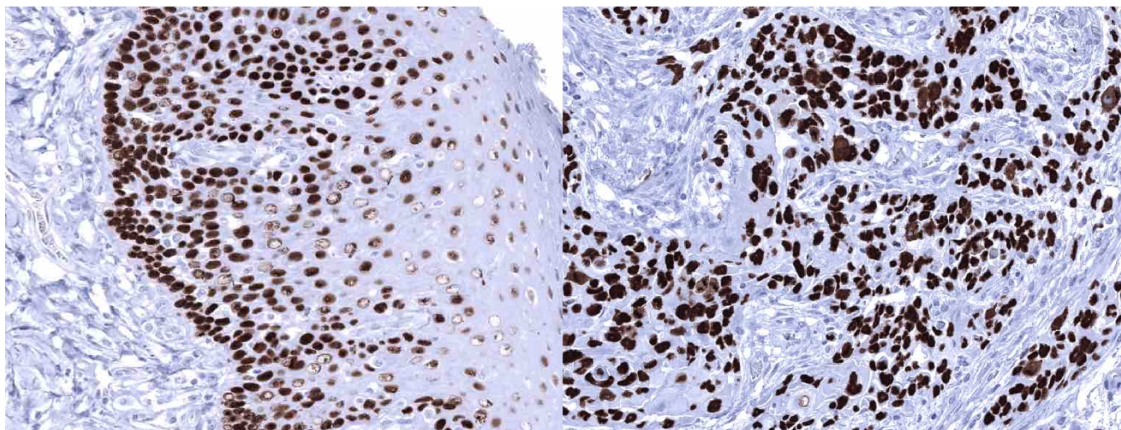
Product data:

Immunohistochemistry (IHC):

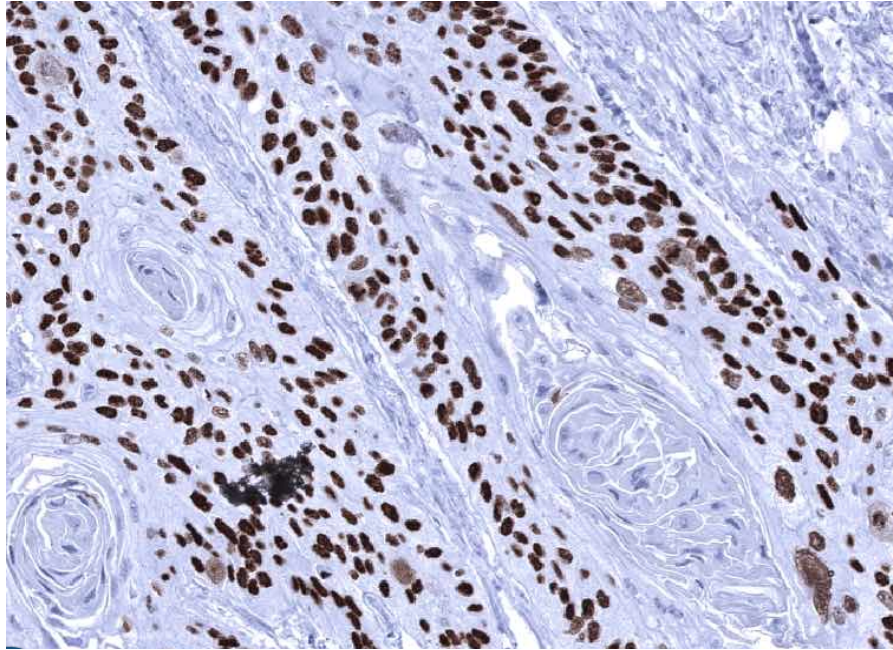
This product was successfully used to stain nuclei in sections of epididymis, esophagus and squamous cell carcinoma of the esophagus and of the pharynx. Recommended concentration: 1-3ug/ml



Formaldehyde-fixed, paraffin-embedded human epididymis stained with TP63 Rabbit Recombinant Antibody AE00384 at 1-2 $\mu\text{g}/\text{ml}$ for 60 minutes at 37°C. Epitope retrieval: Autoclave at 121°C, pH7.8 for 5 min followed by 20 min cooling. DAB staining by HRP polymer.



Formaldehyde-fixed, paraffin-embedded human esophagus (left) and esophagus squamous cell carcinoma (right) stained with TP63 Rabbit Recombinant Antibody AE00384 at 1-2 $\mu\text{g}/\text{ml}$ for 60 minutes at 37°C. Epitope retrieval: Autoclave at 121°C, pH7.8 for 5 min followed by 20 min cooling. DAB staining by HRP polymer.



Formaldehyde-fixed, paraffin-embedded human pharynx squamous cell carcinoma stained with TP63 Rabbit Recombinant Antibody AE00384 at 1-2 $\mu\text{g/ml}$ for 60 minutes at 37°C. Epitope retrieval: Autoclave at 121°C, pH7.8 for 5 min followed by 20 min cooling. DAB staining by HRP polymer.

Tissue Microarray Validation:

Normal tissues

Strong positive

breast
 bronchus mucosa
 ectocervix
 epididymis
 esophagus squamous epithelium
 parotid gland
 placenta early
 placenta mature
 prostate
 renal pelvis
 seminal vesicle
 skin
 skin sebaceous glands
 thymus
 tonsil

Weak to moderate

appendix mucosa
 lymph node

No staining at all

adipose
 adrenal gland
 aorta media
 appendix muscular wall
 bone marrow
 cerebellum
 cerebrum
 colon mucosa
 colon muscular wall
 duodenum Brunner gland
 duodenum mucosa
 endocervix
 endometrium, proliferation
 endometrium, secretion
 fallopian tube
 gallbladder
 heart muscle
 ileum mucosa
 liver
 lung
 myometrium
 ovarian stroma

pancreas
parathyroid gland
pituitary gland anterior lobe
pituitary gland posterior lobe
rectum mucosa
renal cortex
renal medulla
spleen
stomach
testis
thyroid gland
urinary bladder muscular wall

Cancer tissues

Strong positive

esophagus squamous cell carcinoma
non-invasive urothelial carcinoma (low grade, pTaG2)
oral squamous cell carcinoma
pharynx squamous cell carcinoma

Weak to moderate

muscle-invasive urothelial carcinoma

No staining at all

breast cancer no special type
clear cell ovarian carcinoma
clear cell renal cell carcinoma
colorectal adenocarcinoma
endometrioid ovarian carcinoma
esophagus adenocarcinoma
follicular thyroid carcinoma
high-grade serous carcinoma
invasive lobular carcinoma
papillary renal cell carcinoma
prostate adenocarcinoma
