



TMA-validated antibodies

Cat nr AE00385

Product Datasheet

Rabbit Recombinant Antibody, AE711R to:

PD-L1

B7 homolog 1; CD_antigen: CD274; Programmed cell death 1 ligand 1; Programmed death ligand 1; B7-H; B7H1; B7-H1; CD274; PD-L1; PDCD1L1; PDCD1LG1; PDL1; PDCD1 ligand 1

Cellular localization	plasma membrane
Official Symbol (Gene)	CD274
GenelD	29126
SwissProt	Q9NZQ7

Confirmed Applications	IHC
Positive controls	anaplastic large cell lymphoma, colorectal adenocarcinoma, follicular thyroid carcinoma
Aeonian Rating©	90

Purification By Protein A from bioreactor concentrate

Formulation	<input type="checkbox"/>	0.2 mg IgG/ml in PBS with 0.5% BSA & 0.05% azide.
	<input type="checkbox"/>	0.2 mg IgG/ml in PBS with 0.05% azide, without BSA.
Amount	<input type="checkbox"/>	200ug
	<input type="checkbox"/>	1000ug
Isotype		Rabbit IgG, kappa

Confirmed species reactivity	Human
Immunogen	KLH-conjugated peptide, its sequence is proprietary.

Epitope Undisclosed

Storage instructions	Avoid repeated freeze/thaw cycles. For long term storage, keep small aliquots at -20C or -80C and keep one aliquot at 4C for daily experimentations. Azide will preserve antibody at 4C for 6-12 months, when kept away from direct sun light.
----------------------	--

Expiration	Integrity warranted for 24 months after purchase when handled and stored according to instructions, see below.
------------	--

Warranty	This product is only warranted for the specifications as described in this product sheet and only when the product is handled and stored according to instructions. User should validate this antibody in the application and tissue/cell type as required, after confirmation of integrity upon receipt is obtained by reproducing the performance as described below. Should such confirmation not be attempted, any warranty is void. In case of non-conformance, user needs to contact us immediately for replacement or refund.
----------	--

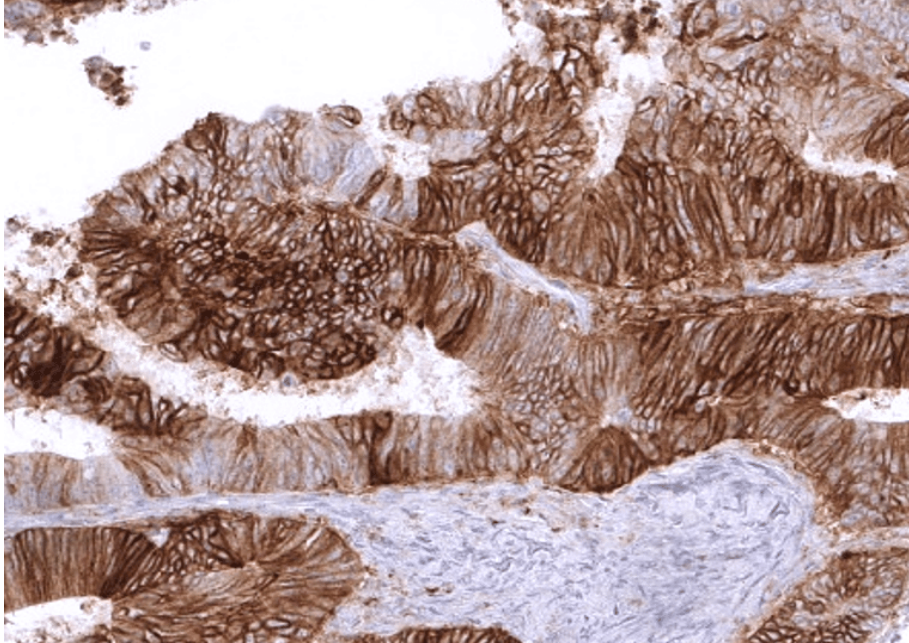
Liability	This product is for in vitro research use only. Any other applications, such as diagnostics or therapeutics, or in vivo experiments, and the validation of this product therein, are solely at the responsibility of the buyer/user.
-----------	--

Product performance see next pages

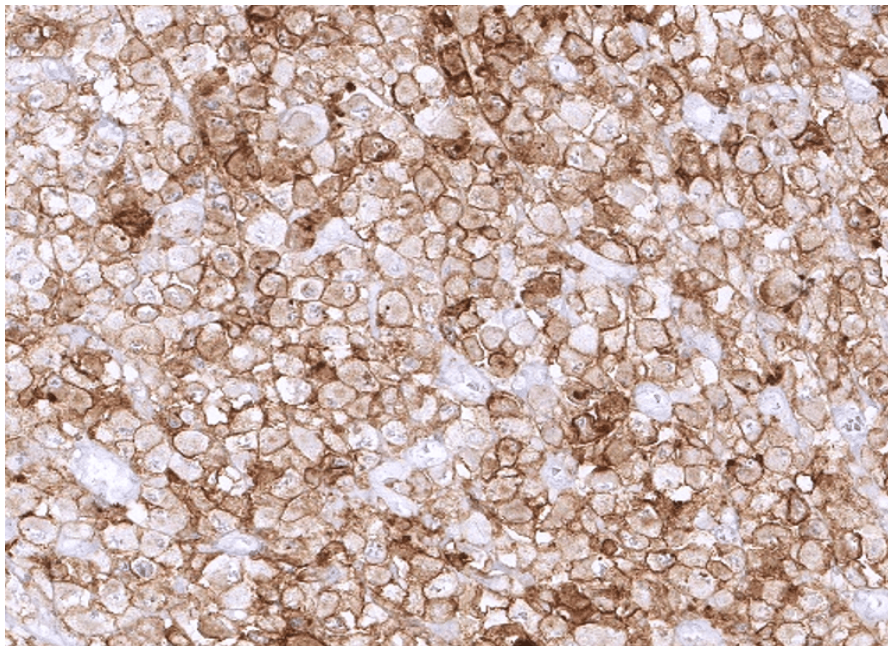
Product data:

Immunohistochemistry (IHC):

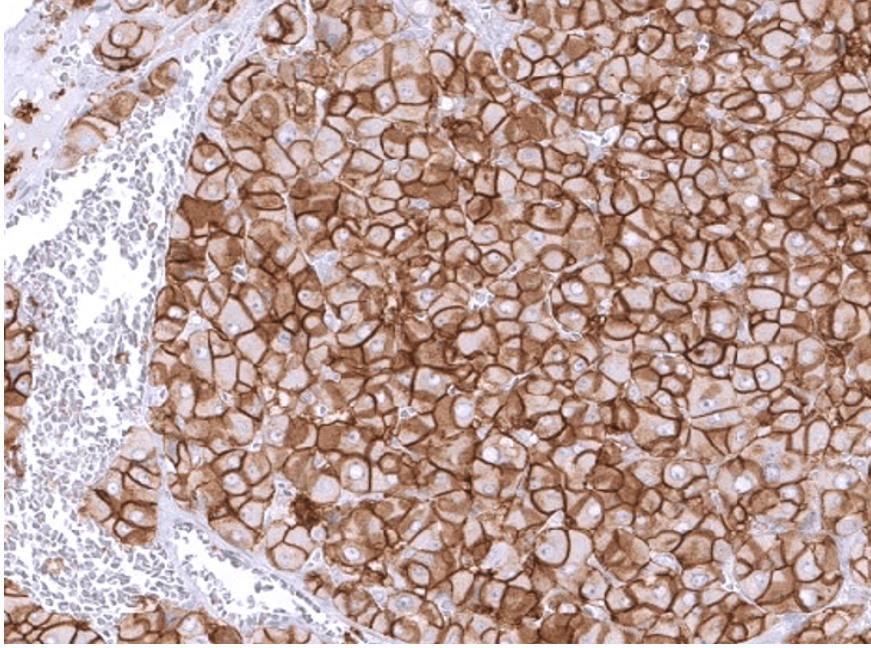
This product was successfully used to plasma membranes in sections of colorectal adenocarcinoma, anaplastic large cell lymphoma, and of follicular thyroid carcinoma. Recommended concentration: 1-3ug/ml



Formaldehyde-fixed, paraffin-embedded human colorectal adenocarcinoma stained with PD-L1 Rabbit Recombinant Antibody AE00385 at 1-2 $\mu\text{g/ml}$ for 60 minutes at 37°C. Epitope retrieval: Autoclave at 121°C, pH7.8 for 5 min followed by 20 min cooling. DAB staining by HRP polymer.



Formaldehyde-fixed, paraffin-embedded human anaplastic large cell lymphoma stained with PD-L1 Rabbit Recombinant Antibody AE00385 at 1-2 $\mu\text{g/ml}$ for 60 minutes at 37°C. Epitope retrieval: Autoclave at 121°C, pH7.8 for 5 min followed by 20 min cooling. DAB staining by HRP polymer.



Formaldehyde-fixed, paraffin-embedded human follicular thyroid carcinoma stained with PD-L1 Rabbit Recombinant Antibody AE00385 at 1-2 µg/ml for 60 minutes at 37°C. Epitope retrieval: Autoclave at 121°C, pH7.8 for 5 min followed by 20 min cooling. DAB staining by HRP polymer.

Tissue Microarray Validation:

Normal tissues

Strong positive	Weak to moderate	No staining at all
lung	appendix mucosa	adipose
ovary corpus luteum	duodenum mucosa	adrenal gland
placenta early	ileum mucosa	aorta media
placenta mature	lymph node	appendix muscular wall
thymus	pituitary gland anterior lobe	bone marrow
	pituitary gland posterior lobe	breast
	spleen	bronchus mucosa
	tonsil	cerebellum
		cerebrum
		colon mucosa
		colon muscular wall
		duodenum Brunner gland
		ectocervix
		endocervix
		endometrium, proliferation
		endometrium, secretion
		epididymis
		esophagus squamous epithelium
		fallopian tube
		gallbladder
		heart muscle
		liver
		myometrium

ovarian stroma
pancreas
parathyroid gland
parotid gland
prostate
rectum mucosa
renal cortex
renal medulla
seminal vesicle
sinus paranasalis
skin
stomach
testis
thyroid gland
urinary bladder muscular wall
urothelium

Cancer tissues

Strong positive

Tumor cells:

anaplastic large cell lymphoma
colorectal adenocarcinoma
follicular thyroid carcinoma
gastrointestinal stromal tumor
prostate adenocarcinoma

Tumor-associated immune cells:

basal cell carcinoma
breast cancer no special type
mucinous ovarian carcinoma
urothelial carcinoma invasive

Weak to moderate

clear cell renal cell carcinoma
non-invasive papillary urothelial carcinoma
vulva squamous cell carcinoma

No staining at all